

saferbromley partnership

Contact for this Agenda: Steve Wood
Tel: 020 8313 4316
E-mail: stephen.wood@bromley.gov.uk
London Borough of Bromley
10 September 2013

To: Members of the

saferbromley partnership

STRATEGIC GROUP

Councillor Tim Stevens J.P. (Chairman)
Stephanie Roberts, (Borough Police Commander) (Vice-Chairman)
Rob Clarke, (London Probation Service)
James Cleverly, (Police and Crime Committee, Greater London Authority)
Susan Clinton, (Affinity Sutton)
Paul Cook, (London Ambulance Service)
Nigel Davies, (LBB Director, Environmental Services)
Clive Davison, (LBB Assistant Director, Public Protection)
Sarah Denton, (Mayor's Office for Policing and Crime)
Selene Grandison, (SE London Probation Service)
Andrew Holcombe, (Borough Commander, Fire Services)
Colin Maclean, (Community Links Bromley)
Jim McGowan, (LBB Head of Environmental Protection)
Paula Morrison, (LBB Assistant Director, Public Health)
Jo Oakley, (Deputy Borough Commander)
Doug Patterson, (LBB Chief Executive)
Lulu Pearce, (Ethnic Communities Programme Manager)
Gill Rose, (Federation of Bromley Housing Associations)
Laurie Taylor, (intu Bromley)
Paula Tucker, (UK Border Agency)
Angela Wilder, (Magistrates Court)
Non Voting Members: Councillor Reg Adams and Councillor Julian Benington

A meeting of the Safer Bromley Partnership Strategic Group will be held at Committee Rooms, Bromley Civic Centre on THURSDAY 19 SEPTEMBER 2013 at 10.00 am

A G E N D A

- 1 INTRODUCTIONS / APOLOGIES FOR ABSENCE
- 2 MINUTES OF LAST MEETING / MATTERS ARISING (Pages 3 - 12)

3 CHAIRMAN'S UPDATE (VERBAL UPDATE)

a SAFER NEIGHBOURHOOD BOARDS

4 BOROUGH COMMANDER'S UPDATE (VERBAL UPDATE)

5 PERFORMANCE REVIEW 2013-2014 QUARTER 1 (Pages 13 - 18)

6 FIFTH LONDON SAFETY PLAN (VERBAL UPDATE)

7 ASB HOTSPOTS INITIATIVES (VERBAL UPDATE)

8 RESIDENTIAL BURGLARY ANALYSIS (Pages 19 - 22)

9 REPORTS FROM SUB-GROUPS

(Substance Misuse Board, Youth Offending Service, Bromley Community Engagement Forum, Arson Sub-Group, Borough Resilience Forum and Operational Tasking) – (Verbal reports)

10 ANY OTHER BUSINESS

11 DATE AND TIME OF NEXT MEETING

10.00am, Thursday 5th December 2013

10.00am, Thursday 13th March 2014

.....

Agenda Item 2

SAFER BROMLEY PARTNERSHIP STRATEGIC GROUP

Minutes of the meeting held at 10.00 am on 27 June 2013

Present:

Councillor Tim Stevens J.P. (Chairman)
Councillor Julian Benington
Nigel Davies, (LBB Director, Environmental Services)
Clive Davison, (LBB Assistant Director, Public Protection)
Sarah Denton, (Mayor's Office for Policing and Crime)
Andrew Holcombe, (Borough Commander, Fire Services)
Jim McGowan, (LBB Head of Environmental Protection)
Paula Morrison, (LBB Assistant Director, Public Health)
Lulu Pearce, (Ethnic Communities Programme Manager)

Also Present:

Karen Bishop, (London Community Payback)
Susie Clark, (LBB Communications Officer)
DCI Kevin Clarke, (Metropolitan Police)
Alison Navarro, (Community Links Bromley)
Conal Percy, (London Ambulance Service)
Peter Sibley, (LBB Anti Social Behaviour Co-ordinator)
Rob Vale, (LBB Head of Trading Standards)

1	INTRODUCTIONS / APOLOGIES FOR ABSENCE	Action
	<p>Apologies were received from James Cleverly (Police and Crime Committee, Greater London Authority), Pratheepan Jeyapragasam (LBB Crime Analyst), Stephen Lewis (LBB Emergency Planning Manager), Councillor Kate Lymer (Chairman, Public Protection and Safety PDS Committee), Colin Maclean (Community Links Bromley), Jo Oakley (Deputy Borough Commander), Stephanie Roberts (Borough Police Commander) (Vice-Chairman) and Ian Smith (Bromley Community Engagement Forum).</p> <p>Apologies for lateness were received from Alison Navarro (Community Links Bromley).</p>	
2	CONFIRMATION OF CHAIRMAN	Action
	<p>Councillor Tim Stevens J.P. was confirmed as the Chairman of Safer Bromley Partnership for the 2013/14 municipal year.</p>	
3	MINUTES OF LAST MEETING / MATTERS ARISING	Action
	<p>The notes of the last meeting held on 21st March 2013 were received.</p>	

	<p>It was noted: Minute 6 – Residential Burglary Analysis Apr – Sep 2012 – Jim McGowan, Head of Environmental Protection advised partners that it had been previously agreed to report a residential burglary analysis to the Partnership on a quarterly basis. Following a reorganisation of Police Crime Analysts, this was not currently possible, however work was being undertaken to allow the LBB Crime Analyst to access police computers to provide this analysis for future meetings of the Partnership.</p> <p>It was AGREED that the minutes of the meeting held on 21st March 2013 be approved.</p>	JMc/PJ
4	CHAIRMAN'S UPDATE	Action
	<p>The Chairman advised the Partnership that following the tragic shooting of a teenager in Penge on 8th May 2013, three community meetings had been held with groups of residents to provide reassurance and to identify issues of concern, which included the need to continue to target drug offences in the area. It had been suggested that the former Citizen's Advice Bureau building might house a community hub for Penge and Anerley to support partners in delivering a range of services to the area, and the Chairman was seeking to have existing proposals to establish a hostel for the homeless deferred until further consideration had been given to the future use of the building. A shrine relating to the shooting had been removed in consideration of the wishes of the Somali community.</p> <p>The fire at Darul Uloom School, Chislehurst on 9th June 2013 was still being investigated by Police. The Chairman had visited the school with other community representatives to offer support to the pupils on behalf of the local area. The school term had now ended.</p> <p>Dr Martin Baggaley, Medical Director, and Eleanor Davis, Service Director of the South London and Maudsley (SLaM) NHS Foundation Trust had attended the meeting of Public Protection and Safety PDS Committee on 18th June 2013. Following discussions, these representatives had assured Members that the South London and Maudsley NHS Foundation Trust would continue to work with a range of partners around security issues identified at Bethlem Royal Hospital following two recent incidents where patients had breached their leave.</p> <p>There had been a further fire at the Waste4Fuel site in St Paul's Cray which had broken out in the mounds of rubbish. This was the fifth fire at the premises in just over three months, including a nine day blaze in mid-March 2013, and was currently being tackled by four fire crews. Andy Holcombe, Borough Commander, Fire Services confirmed that the Environment Agency was working with Waste4Fuel to remove a large amount of combustible waste from the site with weekly targets</p>	Chairman

	being set. A range of partners were aware of the situation at the site and continued to work together.	
5	PERFORMANCE REVIEW 2012/13 (QUARTER 4)	Action
	<p>Consideration was given to the performance monitoring report for Quarter 4, 2012/13 which reported progress against 4 key indicators.</p> <p>Performance Indicator 1: Reduction in Number of Violent Crimes showed that offences related to Violent Crimes represented 20% of the Total Notifiable Offences in Q4, with a reduction of 100 offences compared to the same period in 2011/12. This included a reduction of 16 Assault with Injury offences and 68 Harassment offences.</p> <p>Performance Indicator 2: Reduction in Numbers of Property Crimes showed that offences related to property crimes represented 69% of the Total Notifiable Offences in Q4, with a reduction of 182 offences compared to the same period last year. This included a decrease in burglaries by 15%, robberies by 10% and criminal damage by 18%, although there had been an increase of 6% in offences identified in relation to theft and handling.</p> <p>Progress against Performance Indicator 3: Reduction in Levels of Recorded Anti-Social Behaviour showed a reduction of 432 incidents of Anti-Social Behaviour reported compared to the same period in 2011/12. This included a reduction of 90 incidents of fly tipping reported, 192 incidents of Anti-social Behaviour reported to police and 49 incidents of Anti-Social Behaviour reported the Council compared to the same period in 2011-12.</p> <p>With regard to Performance Indicator 4: Increased Confidence in the Fact that Bromley is a Safe Place, it was noted that the performance indicator, 'To what extent do you agree that the police and local council are dealing the ASB and crime issues that matter in this area' (Question 74AB) was no longer published by the Metropolitan Police. In future, Performance Indicator 4: Increased Confidence in the Fact that Bromley is a Safe Place would be measured using a range of other questions asked in the Metropolitan Police survey on the perception of safety and crime issues in the local area.</p> <p>It was AGREED that the Performance Management Report for Qtr 4 2012/13 be endorsed.</p>	
6	ANNUAL PERFORMANCE REVIEW 2012/13 AND TARGET FOR 2013/2014	Action
	<p>Consideration was given to the performance monitoring report for 2012/13 which reported progress against 4 key indicators, and proposals for performance monitoring targets for 2013/14.</p> <p>There were 20,242 total number offences reported in the Borough during 2012/13, which represented a reduction of 1,653 offences compared with 2011/12. Overall significant progress had been made in relation to reducing crime and disorder in Bromley over the past five years.</p>	

<p>The target for Performance Indicator 1: Reduction in Number of Violent Crimes for 2013/14 was a reduction in the number of violent crimes within the Borough by 2%. During 2012/13 there were 4,101 Total Violent Offences reported to the Police which was 472 fewer offences than in 2011/12 and represented a reduction of 10% compared with the previous year.</p> <p>The target for Performance Indicator 2: Reduction in Numbers of Property Crimes was a reduction in the number of property crimes within the Borough by 2%. During 2012/13 there were 13,524 Total Property Offences reported to Police which was 887 fewer offences than in 2011/12 and represented a reduction of 6% compared with the previous year.</p> <p>The target for Performance Indicator 3: Reduction in Levels of Recorded Anti-Social Behaviour was a reduction in levels of recorded Anti-Social Behaviour within Bromley by 10%. During 2012/13 there were 16,768 total incidents/calls reported to the Police and the Local Authority in relation to Anti-Social Behaviour which was 3359 fewer incidents than in 2011/12 and represented a reduction of 17% compared with the previous year.</p> <p>The target for Performance Indicator 4: Increased Confidence in the Fact that Bromley is a Safe Place was to maintain public confidence to a level of 55%. This was measured by a Metropolitan Police performance indicator, 'to what extent do you agree that the police and local council are dealing the ASB and crime issues that matter in this area' (Question 74AB). The Metropolitan Police had ceased to publish this performance indicator as part of its public satisfaction survey in July 2012, and consequently this target could not be measured for 2012/13. Following discussion by the members of the Partnership, it was agreed that Performance Indicator 4: Increased Confidence in the Fact that Bromley is a Safe Place be measured through two questions in the Metropolitan Police Public Satisfaction Survey comprising:</p> <ul style="list-style-type: none">• Q13. To what extent are you worried about crime in the area?• Q15. To what extent are you worried about Anti-Social Behaviour in the area <p>Following consideration by partners, it was proposed that the performance monitoring targets for 2013/14 be set at the following levels and reviewed on a quarterly basis:</p> <ul style="list-style-type: none">• Reduction in number of violent offences within Bromley by 2%• Reduction in number of property crimes within Bromley by 2%• Reduction in levels of recorded Anti-Social Behaviour by 10%• Public confidence targets for increased confidence that Bromley is a safe place to be set as 73% (Q13) and 81% (Q15). <p>It was AGREED that:</p> <ol style="list-style-type: none">1) The Performance Management Report for 2012/13 be endorsed;2) The proposed performance monitoring targets for 2013/14

	<p>be adopted and reviewed on a quarterly basis; and,</p> <p>3) Performance Indicator 4: Increased Confidence in the Fact that Bromley is a Safe Place be measured through two questions in the Metropolitan Police Public Satisfaction Survey comprising:</p> <p>Q13. To what extent are you worried about crime in the area?</p> <p>Q15. To what extent are you worried about Anti-Social Behaviour in the area</p>	
7	<p>BROMLEY ARSON REDUCTION STRATEGY 2013/14</p> <p>Consideration was given to the Borough's Arson Reduction Strategy for 2013/14 which aimed to continue to reduce the number of deliberate fires across the Borough.</p> <p>Andy Holcombe, Borough Commander, Fire Services outlined a range of measures to support a continued reduction in arson across the Borough. This include the continuation of visual audits by the Borough's five front line fire engines, which would conduct a total of 120 visits a quarter, focusing on areas with increased arson activity. Where possible arson targets were identified and notification would be provided to the Borough's Community Safety Officers who would review what action needed to be taken in partnership with other agencies to reduce the likelihood of further deliberate fires on the same site. The Arson Sub Group also met on a quarterly basis to review previous incidents of arson and the actions taken by partners to respond to these incidents.</p> <p>A programme of preventative work was being planned for 2013/14 and would include the Juvenile Fire Setters Intervention scheme and LIFE (Local Fire Intervention Education) Initiative for young people who had demonstrated fire setting or arson behaviour, as well as Impact Factor days in secondary schools for pupils in Years 8 and 9. A number of participants in the LIFE Initiative, which was a week long course, were also able to benefit from continued support as part of the Bromley mentoring scheme.</p> <p>The Chairman was pleased to note that the London Borough of Bromley had the lowest number of deliberate fires of all London Boroughs, and that a number of other London Boroughs were now adopting similar arson reduction strategies.</p> <p>It was AGREED that the Bromley Arson Reduction Strategy 2013/14 be endorsed.</p>	Action
8	<p>DISABILITY HATE CRIME PROJECT AND CONFERENCE IN JULY 2013</p> <p>Alison Navarro, Community Links Bromley, advised members of the Partnership that a project had been established by Community Links</p>	Action

	<p>Bromley in partnership with the Metropolitan Police to tackle the issue of disability hate crime in the Borough. It was estimated that disability hate crimes affected approximately two thirds of disabled people. The aims of the project were to:</p> <ul style="list-style-type: none"> • Work with the Metropolitan Police to upskill its members in recognising and responding appropriately to disability hate crime; • Raise awareness across the public and voluntary and community sector in recognising disability hate crime and the role that people have in both prevention and in responding once a crime has been committed; • Educate people with disabilities on their rights when disability hate crime occurred; and, • Work with schools to raise awareness of disability hate crime. <p>Open meetings had been held with a range of organisations that supported people with disabilities in Bromley, including Bromley Mencap, Carers Bromley and Magpie Dance. Through these meetings, five key areas of activity for the project had been developed and a number of sub groups had been established to take forward the work areas comprising Campaign Literature, Interactive Performance Piece, Conference, Police Training and Individual Organisation Interventions.</p> <p>A conference addressing issues of Disability Hate Crime would be held at 10.00am on 17th July 2013 at the Churchill Theatre and all members of the Partnership were invited to attend.</p> <p>It was AGREED that the update be noted.</p>	All Partners
9	REPORTS FROM SUB-GROUPS	Action
	<p><u>Substance Misuse Board</u> – The Chairman confirmed that the Substance Misuse Board had carried forward a significant underspend on the 2012/13 budget that would be used to fund one-off projects, subject to agreement.</p> <p><u>Bromley Community Engagement Forum</u> – The Chairman advised the Partnership that the next Youth Conference was currently being planned and would be held at the Hawes Down Youth and Family Centre on 20th October 2013. Seven priority areas had been identified by the Bromley Community Engagement Forum for 2013/14 and this had been submitted to the Mayor’s Office for Policing and Crime for funding.</p> <p><u>Operational Tasking</u> – DCI Kevin Clarke, Metropolitan Police, confirmed that the Police continued to investigate the tragic shooting of a teenager in Penge on 8th May 2013, and the fire at Darul Uloom School, Chislehurst on 9th June 2013 as a priority and that these investigations were progressing. The new Local Policing Model had now been introduced to 15 of 32 London Boroughs, and would be introduced to the London Borough of Bromley on 16th September 2013. It was anticipated that Bromley Police would be 4.2% below</p>	

	<p>staffing levels at this time (which represented a shortfall of 19 officers), but that it was expected that Bromley Police would be fully staffed by January 2014.</p> <p><u>Community Payback</u> – Karen Bishop, London Community Payback, was pleased to note that ten groups were currently working across the Borough in a range of community payback projects, including environmental clean-up and the recycling of waste materials at the Central Depot. Where possible, projects were selected that supported offenders to access work opportunities and upskill for employment. Work was currently undertaken with two schools, and an offer had recently been made to work with Darul Uloom School to support the refurbishment of buildings damaged in the recent fire. Community Payback was seeking to replicate the Bromley Recycling Scheme in other Boroughs. It was also proposed to introduce a project to restore furniture and white goods for sale in local charity shops to help offenders develop new skills. A request had been made by London Community Payback for contributions to fund supervisor costs and this would continue to be considered.</p> <p>It was AGREED the update be noted.</p>	
10	INFORMATION ITEMS	Action
11	<p>(a) The Borough Commander’s newsletter for June 2013 had been circulated for information.</p> <p>(b) The minutes from the meeting of Bromley Community Engagement Forum held on 20th May 2013 had been circulated for information.</p> <p>ANY OTHER BUSINESS</p> <p>(a) The Chairman advised partners that the Local Authority was in discussions with the Mayor’s Office for Policing and Crime around the development of a Safer Neighbourhood Board for Bromley. A model for the Safer Bromley Board would be developed in consultation with stakeholders by the end of July 2013. The membership of this Board would comprise a wide range of stakeholders, including the emergency services, public health, victims of crime and representatives of Community Payback, and would have a key role in engaging with communities across the Borough and identifying crime prevention projects and work in communities. The Safer Bromley Board would also scrutinise the work of the Safer Bromley Partnership. £1M of funding would be made available to London Boroughs by the Mayor’s Office for Policing and Crime to support local initiatives for crime prevention and community engagement, and arrangements to access this funding would be confirmed shortly.</p>	Action

	<p>(b) The Chairman was pleased to announce that a Crime Summit would be held on 14th September 2013 at Bromley Civic Centre (date to be confirmed). This event would be open to a wide range of stakeholders as well as members of the community, and would explore a range of key issues around crime and safety in the Borough. All members of the Partnership were invited to attend and contribute to the event.</p> <p>(c) The Mayor's Office for Policing and Crime had now agreed funding for the Borough for 2013/14. Projects that had received funding included those around domestic abuse, the Safer Bromley Van and the Bromley Mentoring programme. No funding had been received to target anti-social behaviour. However, following negotiation and submission of an alternate bid, it had been provisionally agreed to re-allocate the £86k Substance Misuse, Intensive Support Programme grant to anti-social behaviour initiatives</p> <p>(d) A Summer Programme of diversionary activities was planned from 27th July to 1st September 2013 in parks across the Borough. This would build on the 2012 programme and would include increased involvement of the voluntary sector, more use of volunteers and a broader range of activities to meet the needs of a wider age range and children and young people with special educational needs or disabilities. The programme would be funded from a number of sources, including the Tackling Troubled Families initiative. Paula Morrison, Assistant Director, Public Health, was pleased to confirm that Public Health had agreed to provide funding for the programme and would also be funding work with young people around mental health, which was a key priority identified through the Youth Council Manifesto for 2013/14. The Chairman noted that work had been undertaken with schools to promote the programme and that social media was also being used.</p> <p>(e) Susie Clark, Communications Officer, was pleased to note that the Safer Bromley Twitter feed had now been launched and could be accessed at https://twitter.com/saferbromley. The 'Keep Safe' crime prevention booklet was also nearing completion and a 'proof' copy would be sent to partners shortly for their comments.</p> <p>Andy Holcombe, Borough Commander, Fire Services advised partners that the public consultation on the fifth London Safety Plan had now closed and the results would be provided to the Local Authority on 18th July 2013. The proposals included the building of a new fire station for Orpington and, should this be agreed as part of the fifth London Safety Plan, a temporary fire station would be established in late July 2013, ensuring that Orpington residents did not experience any reduction in service during any building works.</p>	<p>All Partners</p> <p>SC</p>
--	--	-------------------------------

12	DATE AND TIME OF NEXT MEETING	Action
	All meetings start at 10.00am unless otherwise notified. Thursday 19 th September 2013 Thursday 5 th December 2013 Thursday 13 th March 2014	

The Meeting ended at 11.58 am

Chairman

This page is left intentionally blank

Meeting:	Safer Bromley Partnership Strategic Group
Date:	19th September 2013
Subject:	Performance Review 2013/2014 (Quarter 1)
Author:	Pratheepan Jeyapragasam, Crime Analyst pratheepan.jeyapragasam@bromley.gov.uk

1 SUMMARY

1.1 This report is presented in order to update the Safer Bromley Partnership on the performance achieved against the targets set in the last year Safer Bromley Partnership Strategic Group 2012/13. The report provides the latest performance monitoring data to 30th June 2013 (Quarter 4).

2 RECOMMENDATION

2.1 The Strategic Group is asked to:

- Note and comment on the performance information contained within the report.

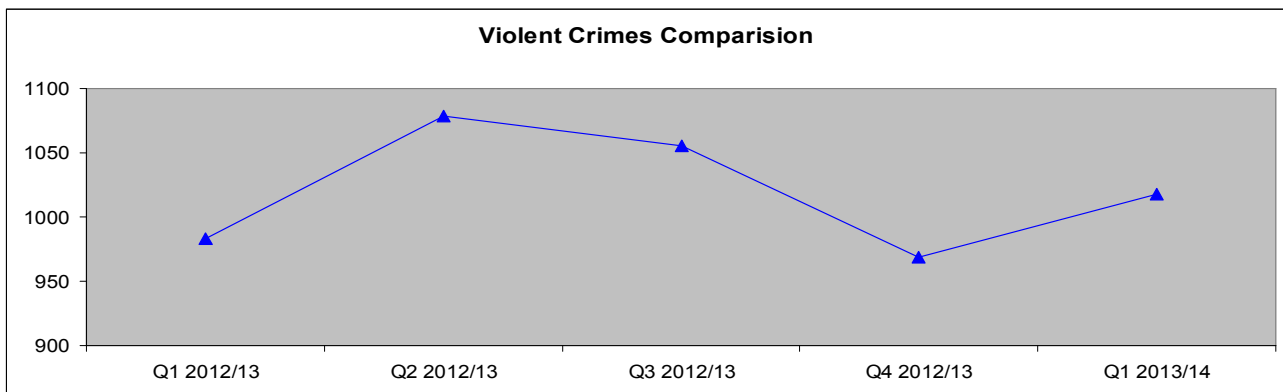
3 BACKGROUND INFORMATION

3.1 This report provides an update of performance at the end of Quarter 1 in the delivery year 2013/2014. The performance picture across the range of Partnership activity continues to be healthy.

3.2 A summary of the “portfolio” of offences and Anti Social Behaviour that are included within these overarching targets is provided at Appendix 1. Reporting on individual crime types and detail of individual operations will only be made as a routine if achievement against set targets is not being made or, in some cases, where the measurable rates of individual offences or types of offending are significantly different from expected trends and predicted patterns etc. The management of these operational level issues will be dealt with outside of the Strategic Group at the combined Police/Partnership Tactical Tasking and Coordination Group chaired by the Borough Police Superintendent.

Performance Indicator 1- Reduction in Numbers of Violent Crimes within Bromley

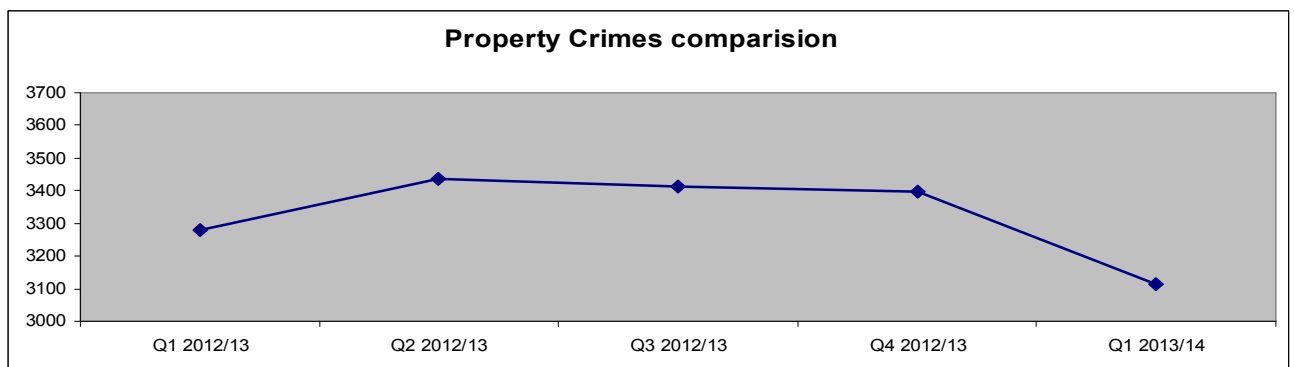
3.3 Offences related to Violent Crimes represent 22% of the Total Notifiable Offences in the period of Quarter 1 this year. The chart overleaf provides more detail.



3.4 During the period April to June 2013 there were 1018 Total Violent Offences reported to the Police. This represented an increase of 35(↑ 4%) offences compared with the same period previous year this includes an increase of 39 Wounding/GBH offences and 17 Other Violence offences.

Performance Indicator 2- Reduction in Numbers of Property Crimes within Bromley

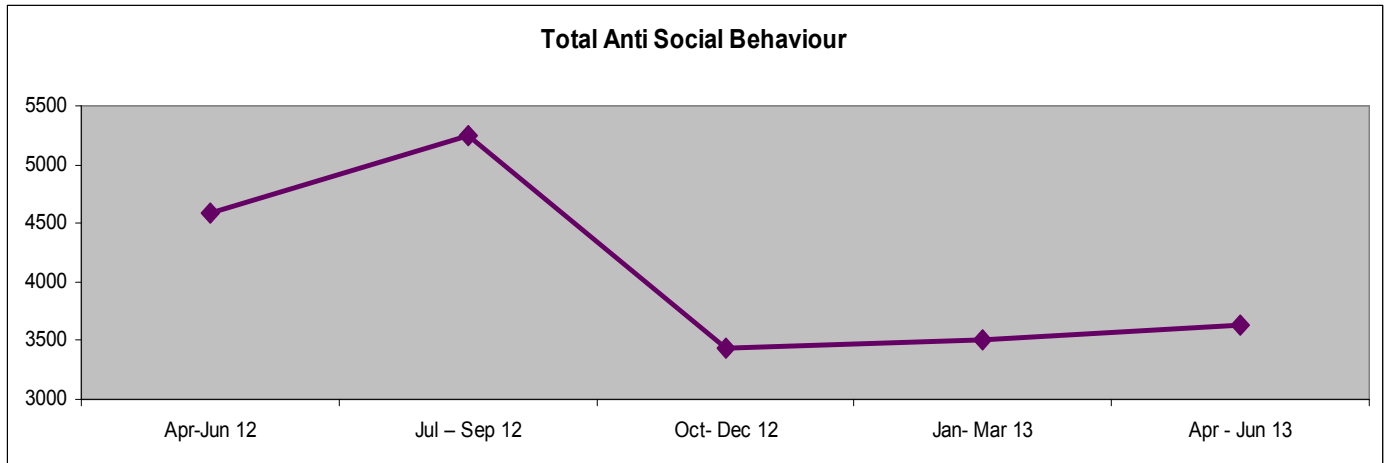
3.5 Total offences to property Crimes represent 67% of the Total Notifiable Offences in the period of Quarter 1 this year.



3.6 During the April to June 2013 period of there were 3115 Total Property related Offences reported to the Police, this represented a reduction of 166 (↓5%) offences compared with the same period previous year.

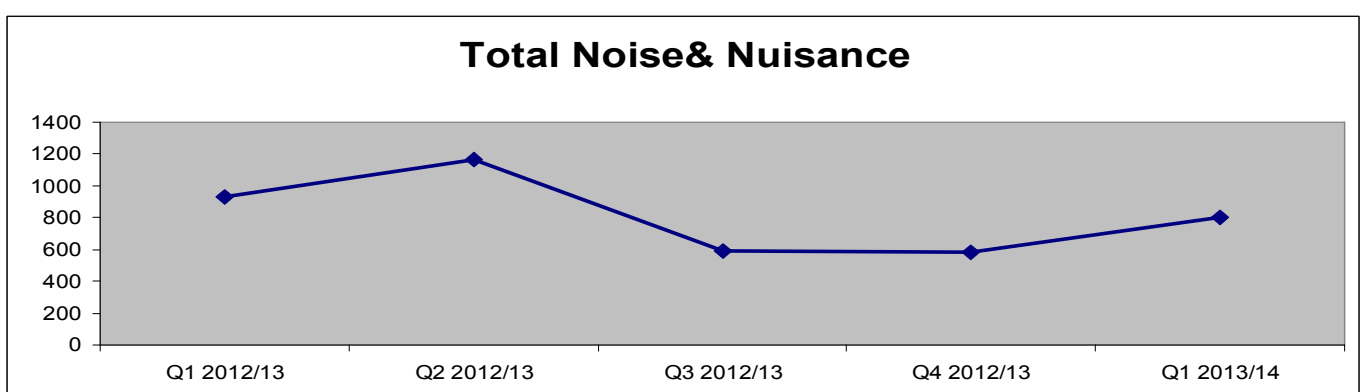
3.7 During this reporting period, the Borough had experienced 697 Burglaries, 116 Robberies, 1797 Theft & Handling and 505 Criminal Damages. Whilst the reduction in levels of overall property crime are positive, it should be noted that, compared with the same period in the previous year, Burglaries were decreased by 16% (137 offences). In relation to Robberies, and Criminal Damage, all these offences are decreased. They were decreased by 8% (10 offences) and 5% (29 offences) respectively but there were 1% (10 offences) increased identified in relation to Theft & Handling.

Performance Indicator 3 Reduction in Levels of Recorded Anti Social Behaviour

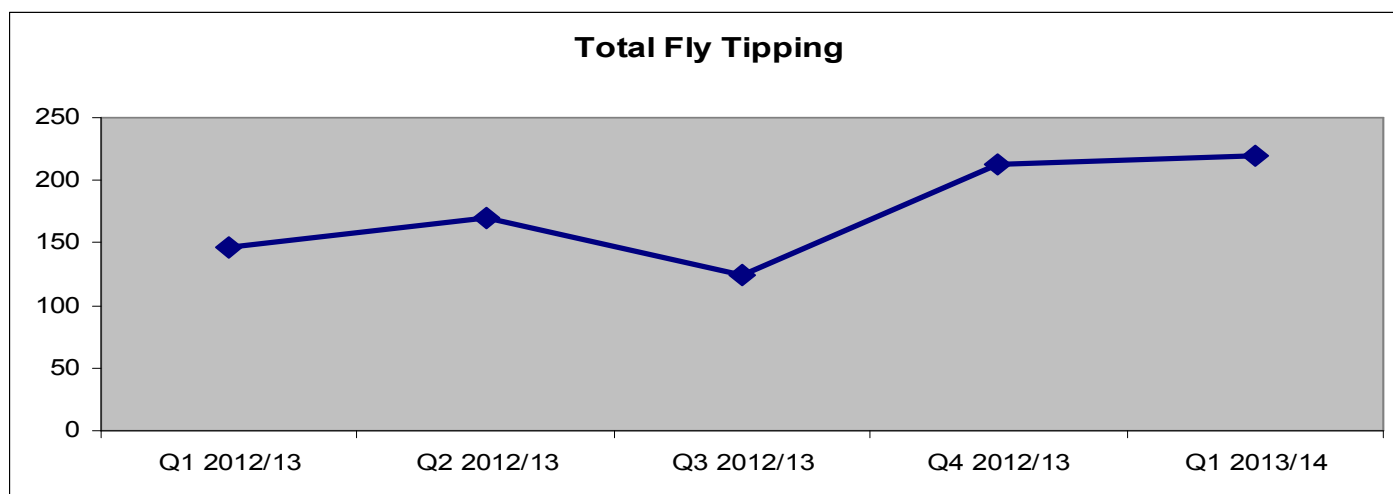


	Apr- Jun 12	Jul – Sep 12	Oct- Dec 12	Jan- Mar 13	Apr- Jun 13
Noise & Nuisance	931	1162	589	579	801
Graffiti	1108	787	530	539	404
Fly Tipping Investigation	146	170	124	213	201
ASB to Council	108	126	81	85	83
ASB to Police	2291	2999	2116	2084	2139
Total ASB	4584	5244	3440	3500	3628

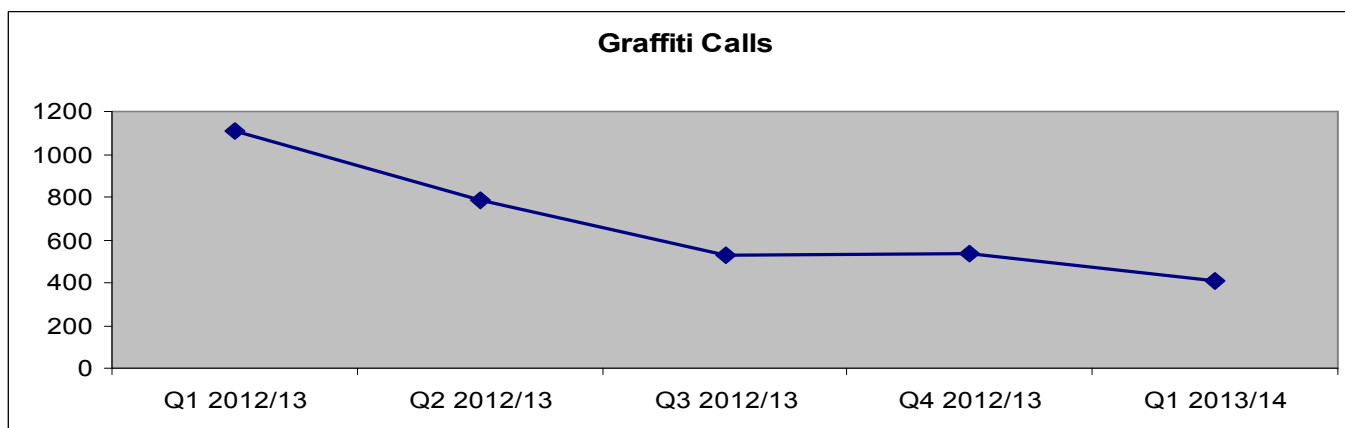
3.8 During the reporting period, the Borough has experienced a reduction of 956 (21%) incidents of ASB reported when compared with the same period last year.



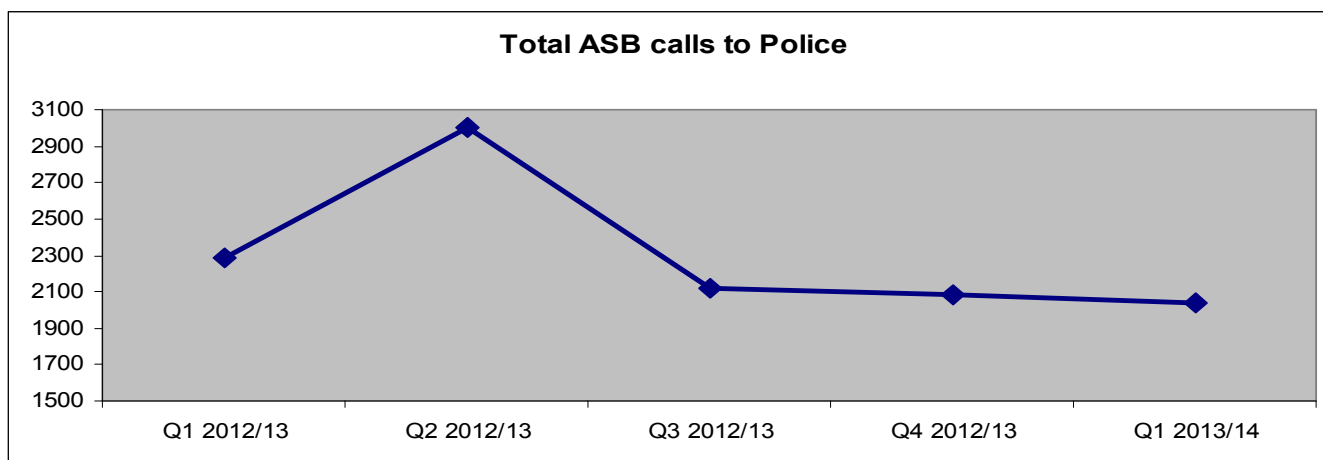
3.9 As can be seen from the figure above, during the reporting period (April - June 2013), the Borough has experienced a reduction of 130 (14%) incidents of Noise and Nuisance ASB reported when compared with the same period last year.



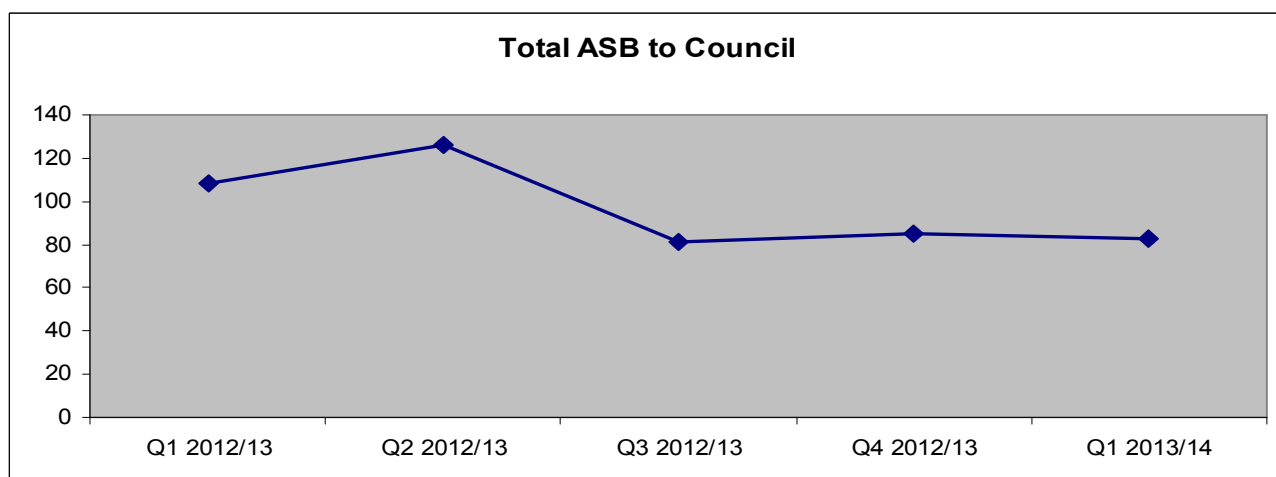
3.10 As can be seen from the figure above, during the reporting period, the Borough has experienced an increase of 74 incidents of Fly Tipping ASB reported when compared with the same period last year.



3.11 As can be seen from the figure above, during the reporting period, the Borough has experienced a reduction of 704 incidents of Graffiti ASB reported when compared with the same period last year.



3.12 During this reporting period it is noted that there was a reduction of 152 incidents reported to police regarding ASB compared with the same period last year.



3.13 During April to June 2013 the Borough has experienced a reduction of 25 incidents of ASB reported when compared with the same period last year.

Performance Indicator 4 Increased Confidence in the Fact that Bromley is a Safe Place

3.14 In April to June data has not been published by Met Police for this performance indicator.

APPENDIX 1

Performance Indicator Portfolios:

Violence Portfolio	
Offences	Supporting Measures
Violence with Injury	Domestic Violence
Common Assault	Domestic Violence Sanction Detection Rate
Harassment	Domestic Violence Arrest Rate
Threats/ Conspiracy to Kill	Serious Youth Violence
Blackmail	Knife Enabled Crime
Kidnapping/ False Imprisonment	Knife Enabled Crime Sanctioned Det. Rate
	Gun Crime
	Gun Crime Sanctioned Det. Rate
	Most Serious Violence
	Most Serious Violence Sanctioned Det. Rate

Property Portfolio
Offences:
Personal Robbery
Commercial Robbery
Total Robbery
Residential Burglary
Non-Residential Burglary
Theft/Taking Motor Vehicles
Theft From Motor Vehicles
Theft From Shops
Theft From Person
Theft of Pedal Cycles
Other Theft
Criminal Damage

Anti Social Behaviour Portfolio
ASB:
Noise & Nuisance
ASB to Council
Fly Tipping
ASB to Police
Graffiti

Meeting:	Safer Bromley Partnership Strategic Group
Date:	19th September 2013
Subject:	Residential Burglary Analysis (April – June 2013) - Update
Author:	Pratheepan Jeyapragasam, Senior Crime Analyst pratheepan.jeyapragasam@bromley.gov.uk

1 SUMMARY

- 1.1 This report provides an update in relation to the analysis of Burglary in a Dwelling between April and June 2013.
- 1.2 The analysis indicates a number of key factors in the current pattern of residential burglary and it is proposed that these key factors be tackled in order to facilitate a reduction in offending.

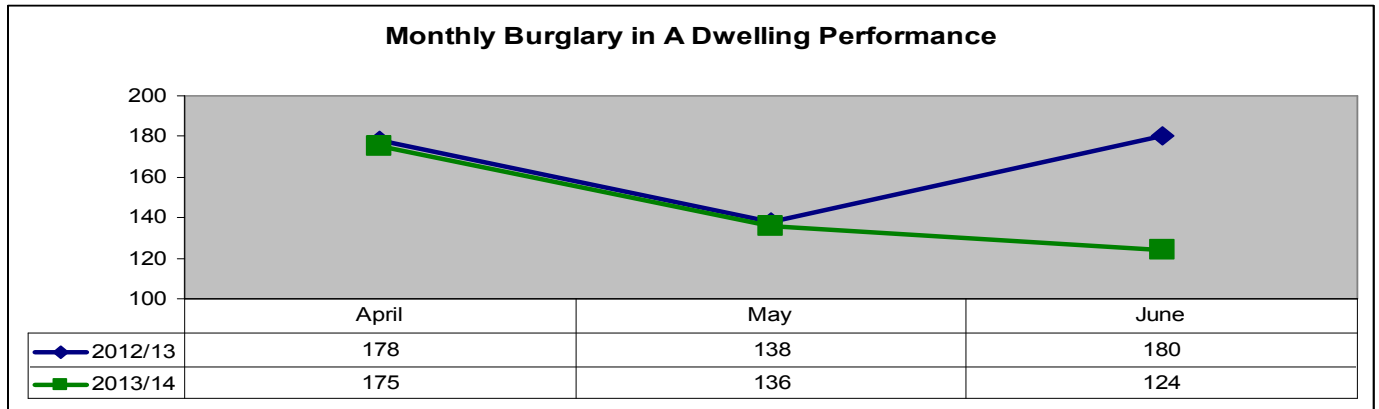
2 RECOMMENDATION

- 2.1 The Strategic Group is asked to note the information contained within this report and comment on the key findings.
- 2.2 The Partnership is advised that work be intensified to continue the delivery prevention advice to decrease Burglary offences (to include specific focus in terms of location and offence types).Delivered by Safer Neighbourhood Development Officers.
- 2.3 Analysis indicates that offences generally occur overnight; therefore it may also be appropriate to review the late night security at some venues, especially those along the borough's borders.

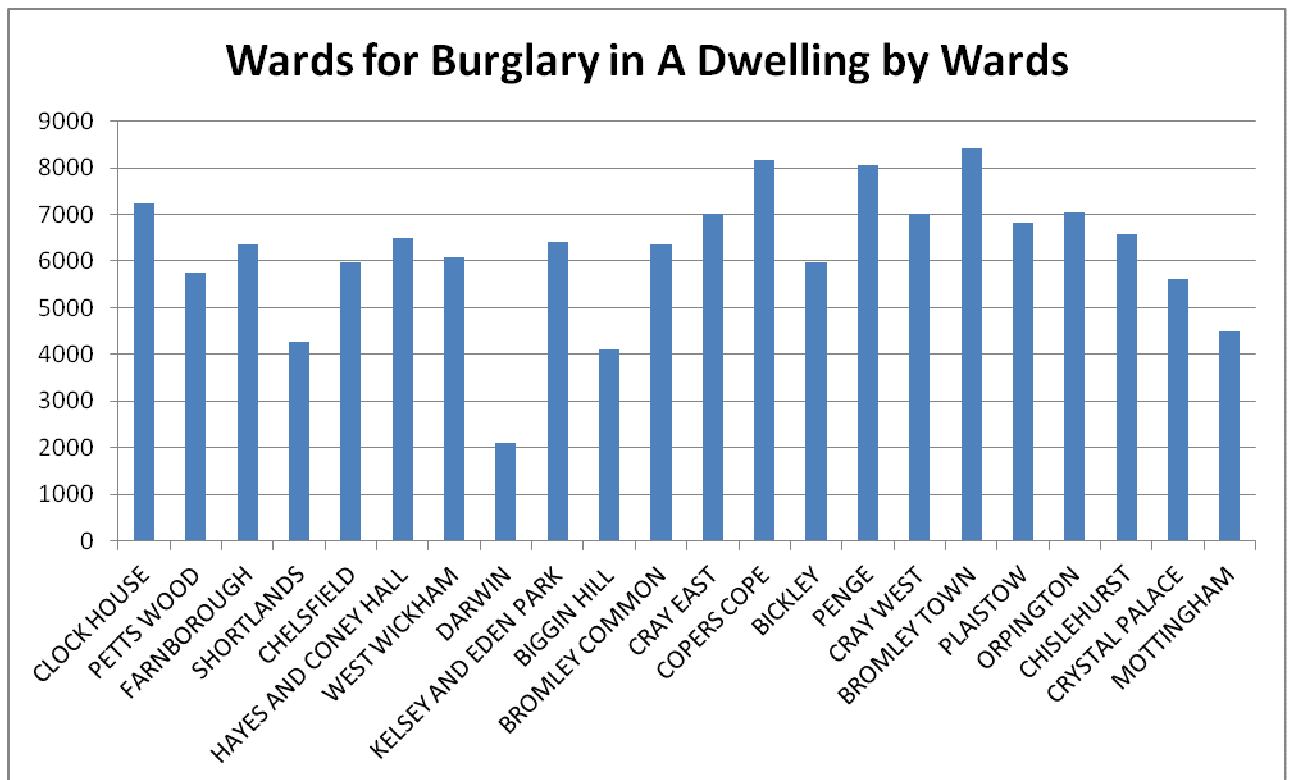
3 BACKGROUND INFORMATION

- 3.1 The data range used for the local analysis part of this investigation is from April to June 2013 (quarter 1).
- 3.2 During the April to June 2013 period of there were 435 Burglary in a dwelling Offences reported to the Police, this represented a reduction of 61 (↓12%) offences compared with the same period previous year.

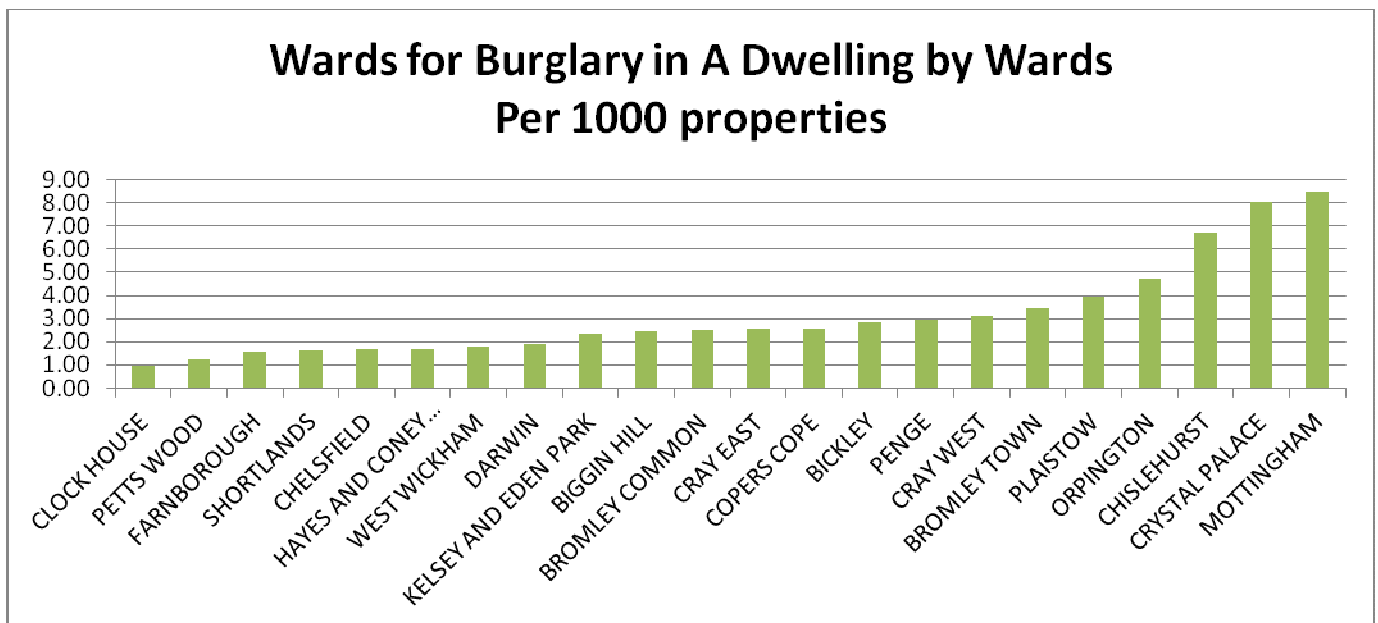
Burglary in A Dwelling



3.3 As shown above, Burglary in a Dwelling Offence numbers were similar in April and May this year compared with last year, but in June Burglary in a dwelling were reduced by 56 compared with last year.

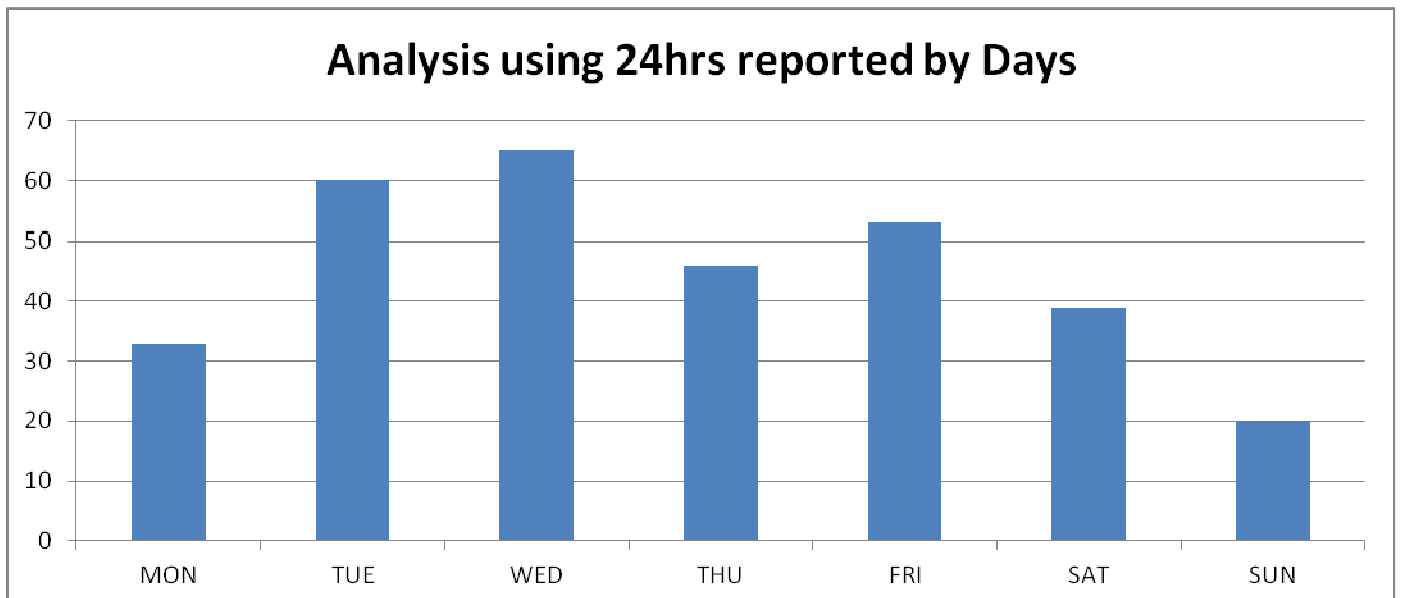


3.4 There are three main hotspot locations for Burglary in a Dwelling, Crystal Palace, Chislehurst and Mottingham. Based on current issues affecting Bromley Borough these locations remain the main focus for the Police.

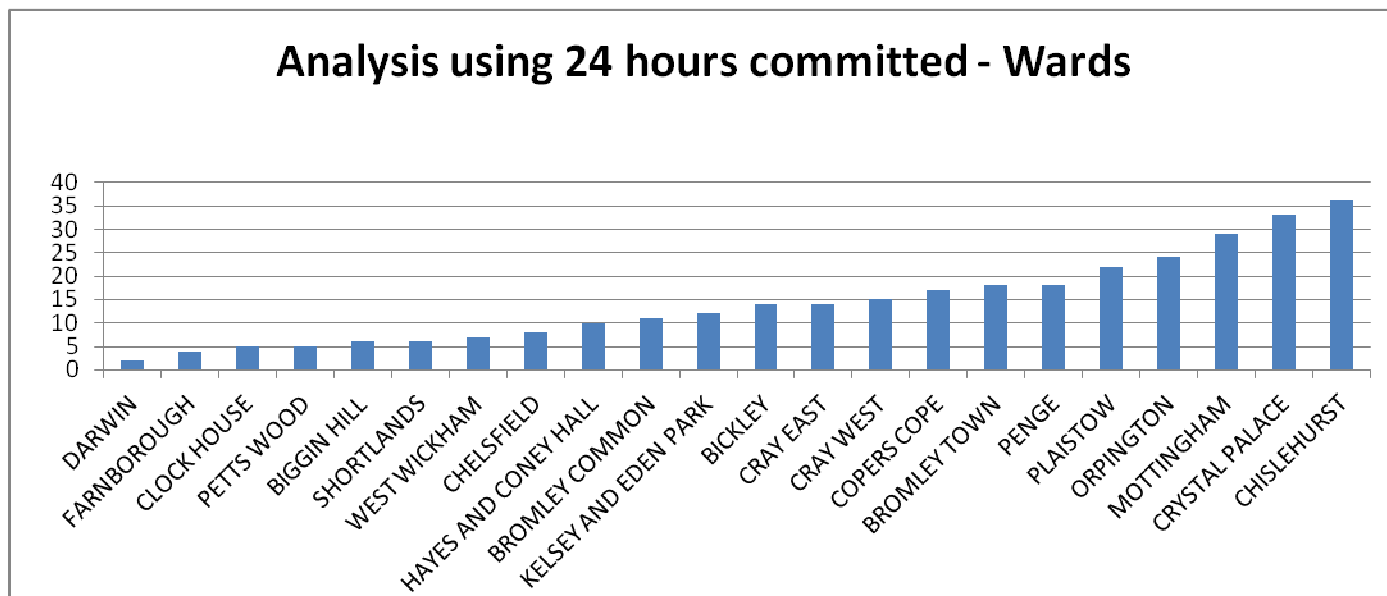


3.5 The chart above shows that Crystal Palace, Chislehurst and Mottingham were the three wards which have highest Burglary offences reported in the reporting period compared with number of properties in each wards

3.6 76% of the totals Burglary in a Dwelling Offences were reported within 24 hours period this shows that Burglary actually occurred within the 24 hours.

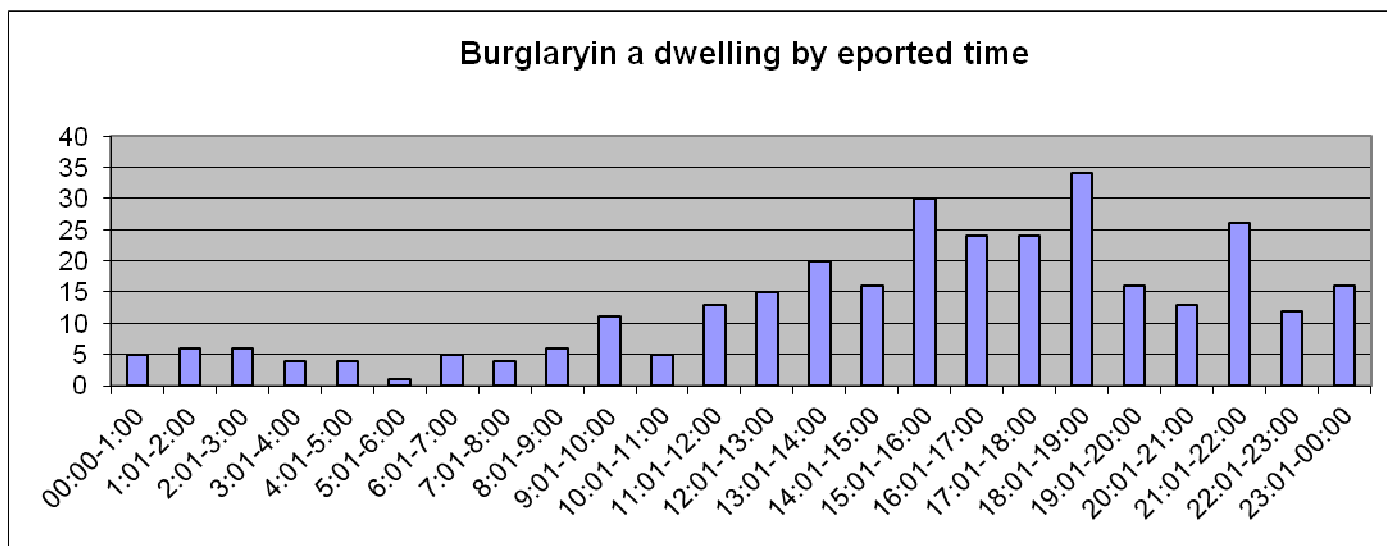


3.7 Based on the above 76% offences over the last Quarters, there was a peak on Tuesday and Wednesday for Burglary in a dwelling offence. It must be noted that weekend has seen the least number of offences reported.



3.8 As shown above, Crystal Palace, Chislehurst and Mottingham were the three main hotspots for Burglary in a Dwelling which was reported within 24 hours.

3.9 Burglary in a Dwelling reports seems to peak between the hours of 18:00 -19:01 and 15:01-16:00.



3.10 Burglaries in dwelling offences were reported to police in this reporting period where 90% of the properties were empty when this crime happened.

3.11 There were no specific targets victims identified, in general there were some vacant properties targeted either renovated or residents on holiday.